

Product datasheet

Spark NOVA 2



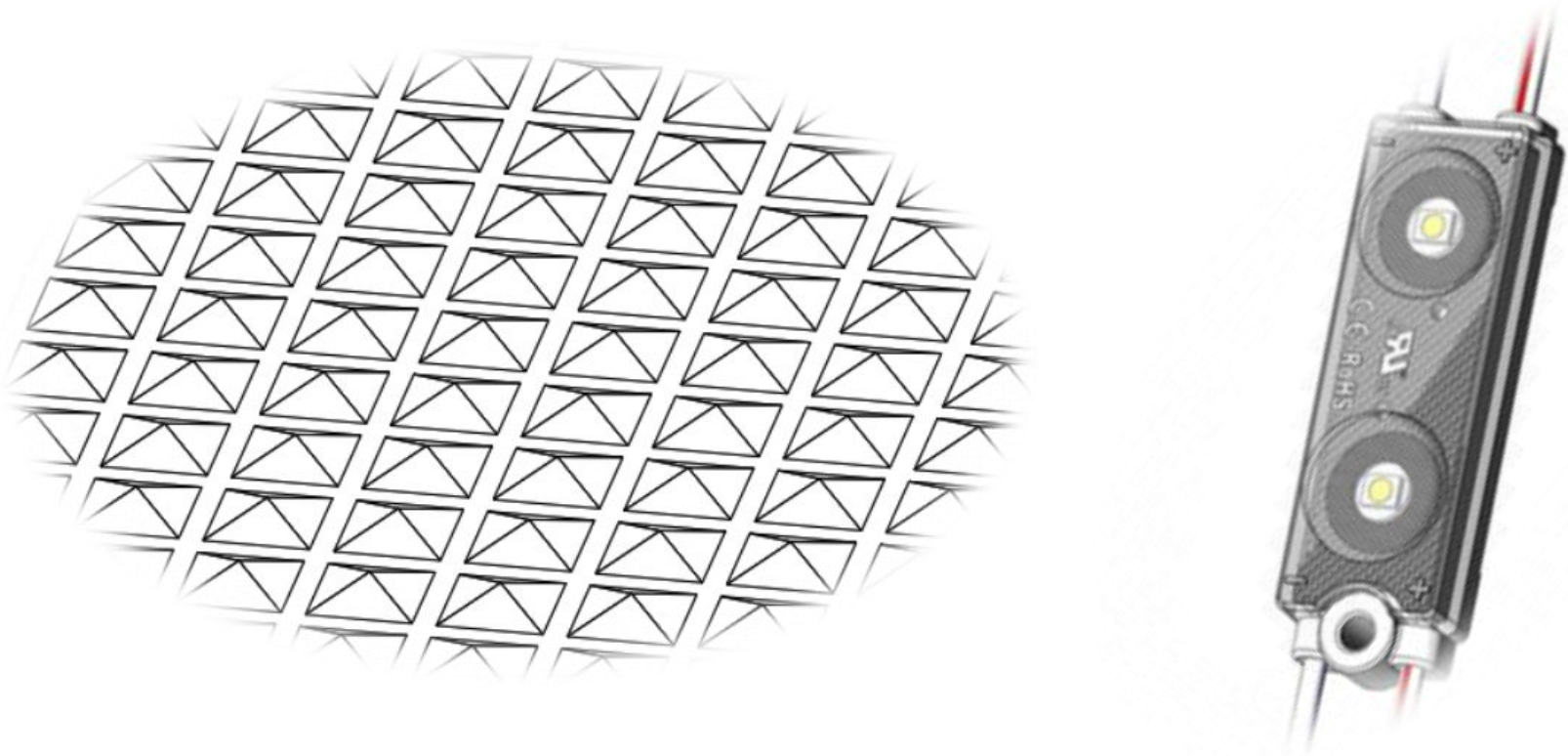
Areas of application

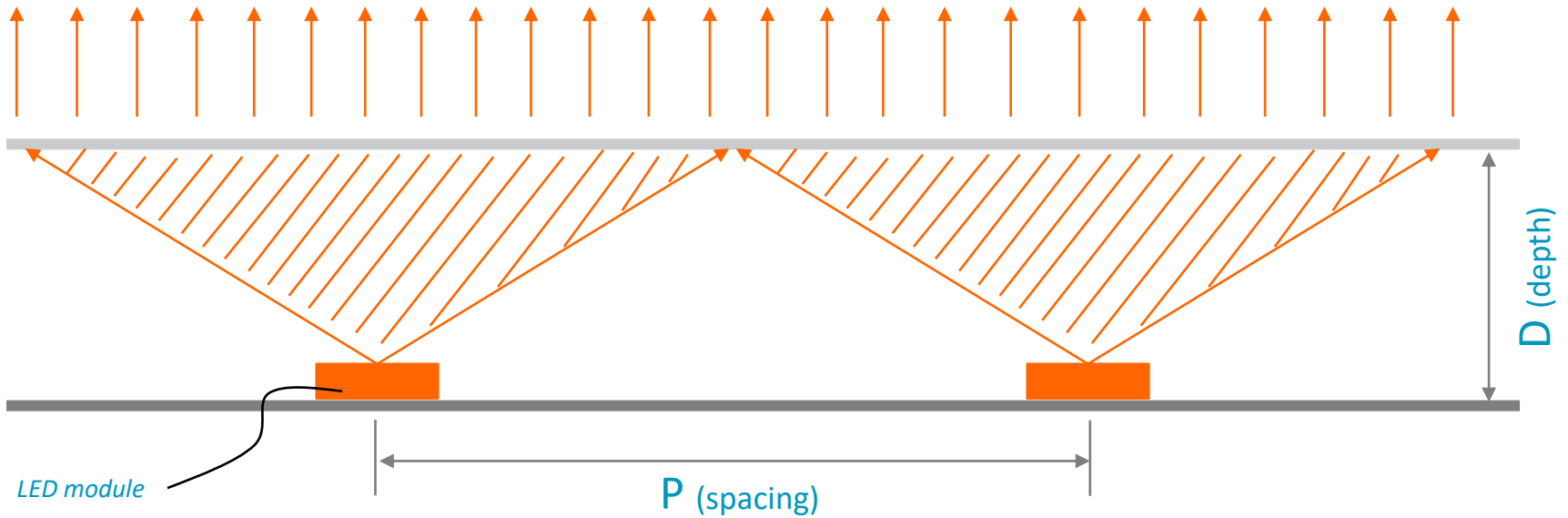
- Signage and illuminated advertising.
- Backlighting of channel letters and light box.
- Best for 30mm to 200mm depth (1.2inch to 8inch).

Product main benefits

- Uniform and efficient illumination at high LED module distance thanks to new excellent lens design.
- New technology to get high efficiency.
- 5 Years warranty.
- 170 lm/W (6500K).

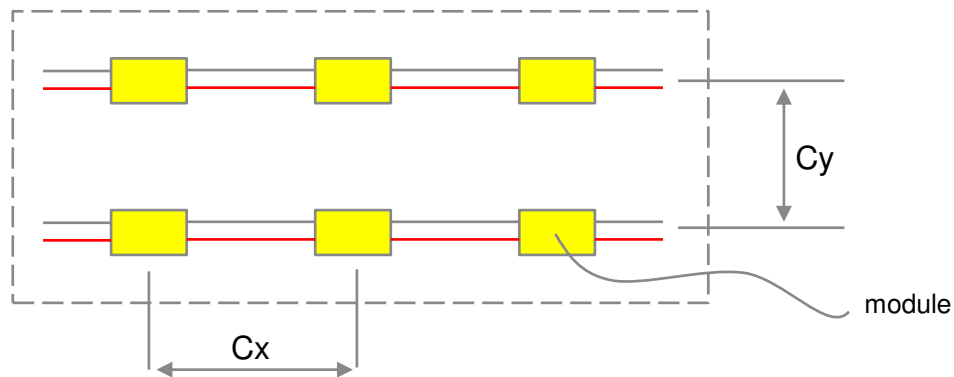
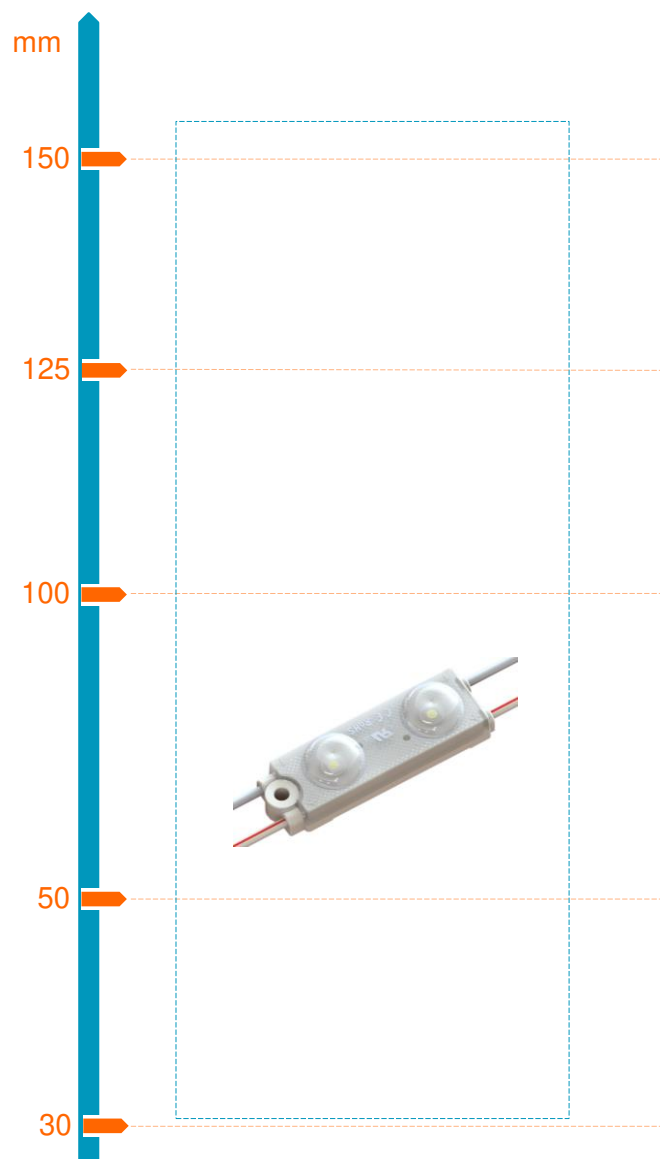
Overall micro lens design can improve the lens uniformity performance (patented).





$$\text{optical performance proportion} = \frac{D(\text{depth})}{P(\text{spacing})} = 1:3$$

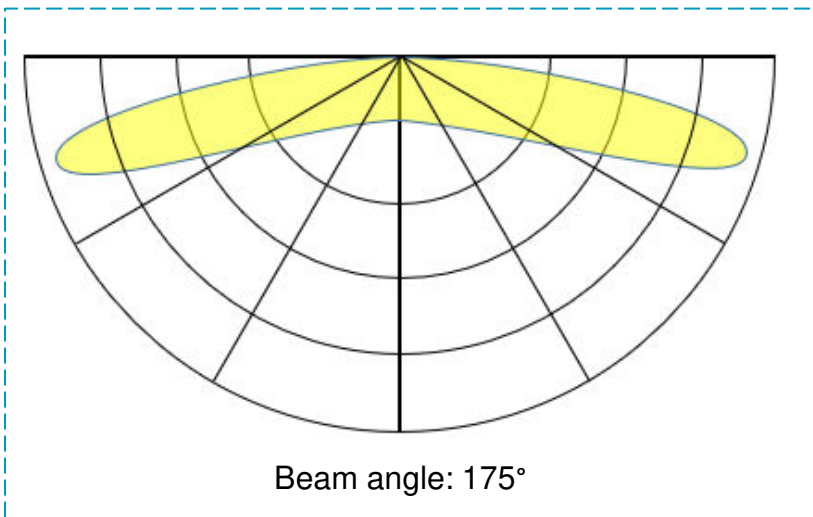
- The proportion of “P” and “D” can show the performance of lens optics design.
- The bigger proportion, the wider light spot.
- The proportion is for reference from lab, actual layout need based on real application.

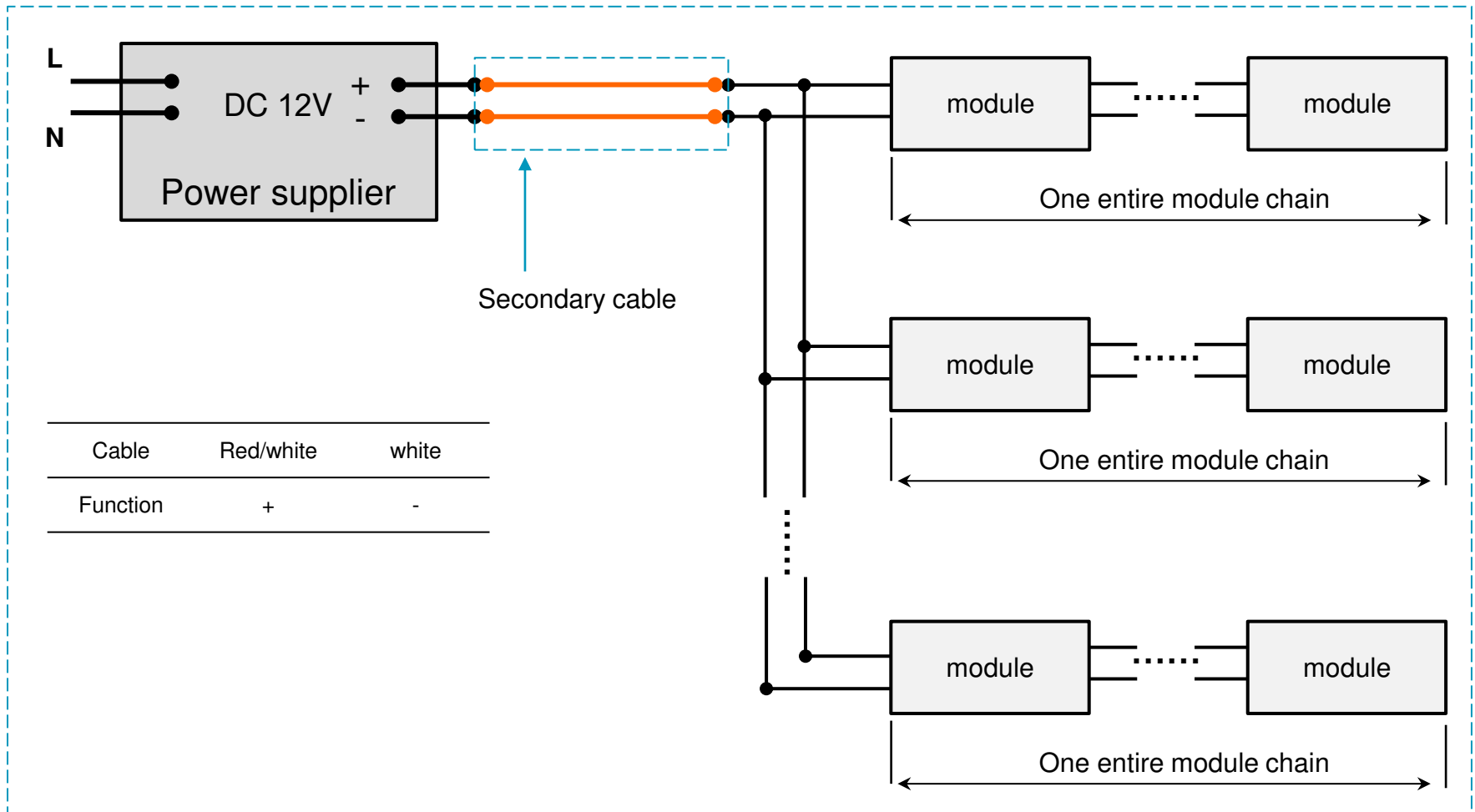


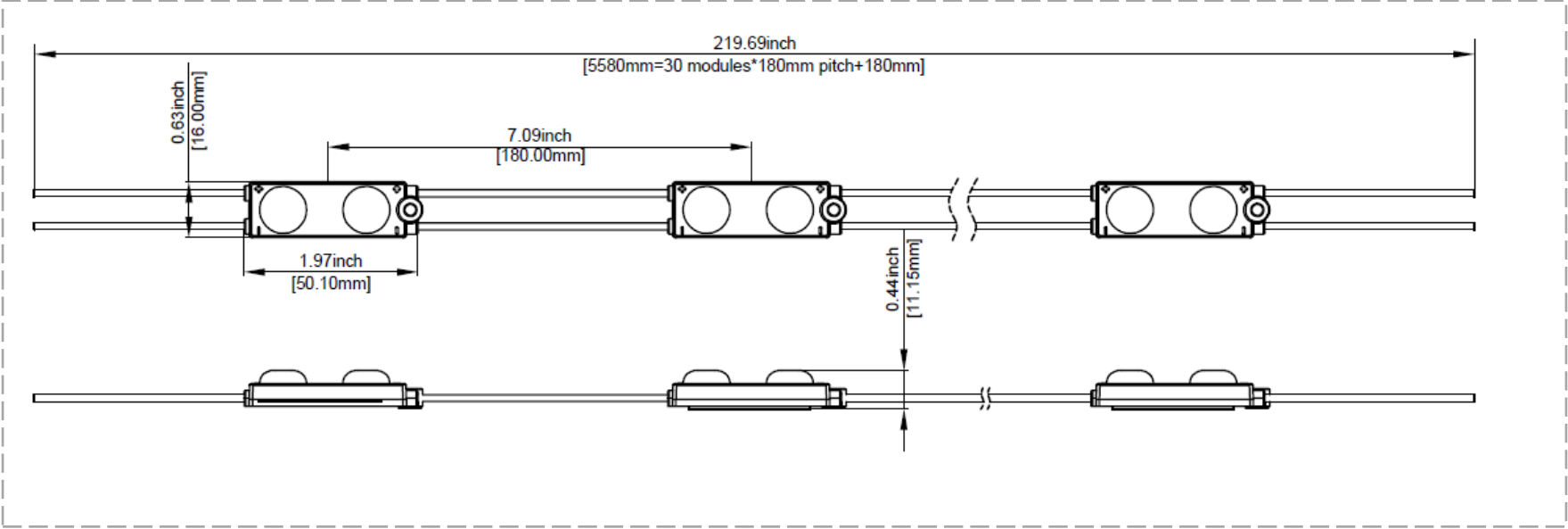
Product (6500K)	Depth	Cx	Cy	Surface illuminance
NOVA 2	80mm	180mm	160mm	1380lux

Application Conditions and light distribution

Operating Environment (t_a)	-25°C to +60°C
Storage Temperature Range (t_s)	-40°C to +85°C
IP Rating	IP67
Lifetime (L70B50)	5 years
t_c temperature	80°C
Dimming mode	Dimmable
Cutting Resolution	Cut on wire between every module







Photometrical data

Products	Part Numbers	Light color (designation)	Color (CCT, wavelength)	Typical Brightness (lumen/module)	Typical Brightness (lumen/ft.)
NOVA2	M31210700-N7	White	5000K/6500K/7100K	122	207

PRODUCTS	PART NUMBERS	Package unit (modules/carton box)	Carton box Dimensions (length x width x height)
NOVA2	M31210700-N7	1400	52 x 37 x 26 cm

Additional information:

- Installation of LED modules (with power supplies) needs to be made under consideration of all valid regulations and norms.
- Installation by qualified electrician only.
- Parallel connection is mandatory for safe electrical operation. Serial connection of LED modules is discouraged. Unbalanced voltage drop in serial connection can cause hazardous overload
- Electrical contact is achieved with the contact cables or the terminals of the module. Please refer to the technical data for maximum number of LED modules that can be operated on one control gear.
- To avoid mechanical damage, the LED modules have to be attached securely to the intended mounting surface. It is recommended to avoid heavy vibration.
- LED modules are dimmable by means of PWM (pulse width modulation).